

PRODUCT INFORMATION SHEET

REF	Bright/lyse	RUO	IQP-393	250 ml	250 tests
------------	--------------------	------------	---------	--------	-----------

RUO	For Research Use Only
------------	------------------------------

	Description
---	--------------------

Summary Bright/lyse is an erythrocyte (RBC) lysing solution in whole blood

Intended use Bright/lyse is a RBC lysing solution to be used in a lyse-no-wash procedure for flow cytometric enumeration of antigenic markers

Immunofluorescence staining and lysing protocol using directly conjugated antibodies

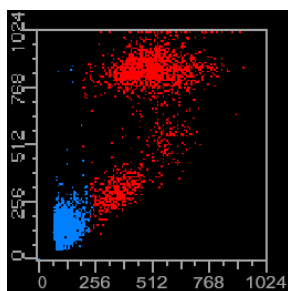
1. Add 100 µl of EDTA-treated blood (i.e. approx. 10⁶ leukocytes) to a 5 ml reagent tube. The content of one tube is sufficient to perform one test
For combinations with anti-kappa and/or anti-lambda Ig see application note below
2. Add to each tube 10 µl of labeled monoclonal antibody or 20 µl of labeled monoclonal antibody combination (duals or triples)*
3. Vortex the tube to ensure thorough mixing of antibody and cells
4. Incubate the tube for 15 minutes at room temperature in the dark
5. Add 2 ml of Bright/lyse to each tube. Mix and incubate 10 minutes at room temperature for 10 minutes
6. **Optionally when using Bright Count Microspheres (IQP-391 [50 tests], IQP-392 [100 tests])**
 - Prior to use of Bright Count Microspheres™, homogenize the vial manually for 30-40 seconds (*do not use a vortex*). With the same pipette used for dispensing the sample (without changing the volume on the pipette), add 100 µl of Bright Count™ Microspheres to each tube
 - Mix thoroughly and incubated in dark for 10 min at room temperature
7. Before analyzing by flow cytometry homogenize for 30 seconds
8. If samples analysis is not performed directly, proceed through step 6 and stored the samples at 4°C in the dark until further analysis

Application note for anti-kappa and/or anti-lambda Ig combinations

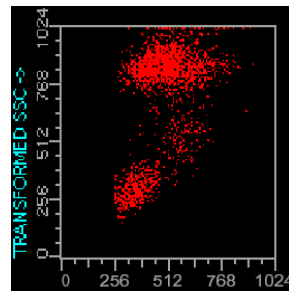
Add 2 ml of PBS containing 0.001% (v/v) Heparin (heated to 37 °C!) to the cell suspension
 Vortex, centrifuge (2 min at 300x g) and discard the supernatant
 Repeat this step twice
 Resuspend the pelleted blood cells in 100 µl PBS¹ containing 0.001% (v/v) Heparin

* Appropriate mouse Ig isotype control samples should always be included in any labeling study
¹ PBS: Phosphate Buffered Saline, pH 7.2

Representative Data



Dot plot of FSC/SSC after acquisition With low FSC threshold. The platelets may be observed in a low FSC/SSC region



Representative data acquisition with a higher FSC threshold; platelets have been eliminated



Handling and Storage

Storage is at room temperature. The lysing solution is supplied in 0.09% Sodiumazide (NaN₃). Reagents are stable for the period shown on the vial label when stored properly

Warranty Products sold hereunder are warranted only to conform to the quantity and contents stated on the label at the time of delivery to the customer. There are no warranties, expressed or implied, which extend beyond the description on the label of the product. IQ Products is not liable for property damage, personal injury, or economic loss caused by the product

Characterization

To ensure consistently high-quality reagents, each batch of lysing solution is tested for conformance with characteristics of a standard reagent. Representative flow cytometric data is included in this data sheet



Warning All products contain Sodiumazide. This chemical is poisonous and hazardous. Handling should be done by trained staff only

References

1. Menendez, P., Redondo, O., Rodriguez, A., Lopez-Berges, M.C., Ercilla, G., Lopez, A., Duran, A., Almeida, J., Perez-Simon, J.A., San Miguel, J.F., Gratama, J.W., Orfao, A. 1998. **Comparison between a lyse-and-then-wash method and a lyse-non-wash technique for the enumeration of CD34+ hematopoietic progenitor cells.** Cytometry. Dec 15;34(6):264-71.
2. de la Mano, A.M., Sevillano, S., Manso, M.A., Pérez, M., de Dios, I. 2004. **Cholecystokinin blockade alters the systemic immune response in rats with acute pancreatitis.** International Journal of Experimental Pathology 85 (2):75.
3. Storie, I., Sawle, A., Goodfellow, K., Whitby, L., Granger, V., Ward, R.Y., Peel, J., Smart, T., Reilly, J.T., Barnett, D. 2004. **Perfect Count: A Novel Approach for the Single Platform Enumeration of Absolute CD4T-lymphocytes.** Cytometry Part B (Clinical Cytometry) 57B:47–52.



IQ Products BV
Rozenburglaan 13a
9727 DL Groningen, The Netherlands



+31 (0)50 57 57 000



+31 (0)50 57 57 002



Technical

marketing@iqproducts.nl



Orders

orders@iqproducts.nl



Find us on the internet

www.iqproducts.nl
