

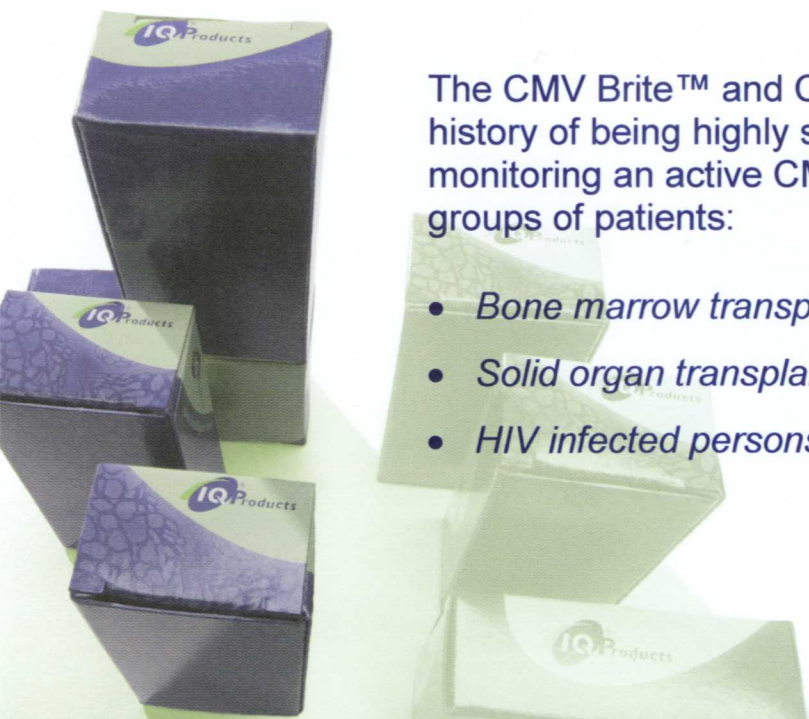
# The antigenemia standard in the diagnosis and monitoring of an active CMV infection

## CMV Brite™

### Special features

- Complete kits for the diagnosis of an active CMV infection
- Detection at the single cell level
- Results within 2-4 hours after sample collection
- **CE IVD** for *In Vitro Diagnostic use*
- FDA approved, USA

### Applications



The CMV Brite™ and CMV Brite™ Turbo kits have a long history of being highly suitable for routine diagnostic use in monitoring an active CMV infection in at least three major groups of patients:

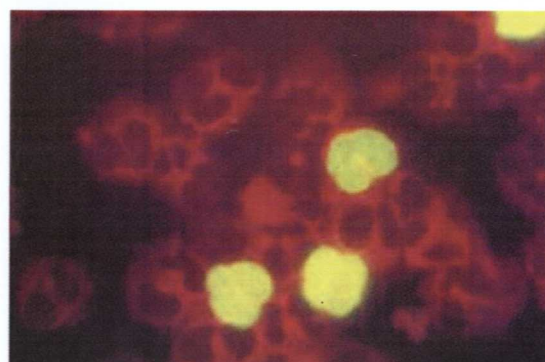
- *Bone marrow transplant recipients*
- *Solid organ transplant patients*
- *HIV infected persons and AIDS patients*

Product	Application	Package Size	Product Code
CMV Brite™	CMV antigenemia (4 hours)	100 tests	VIR-CMV 100
		40 tests	VIR-CMV 40
CMV Brite™ Turbo	Rapid CMV antigenemia (2 hours)	110 tests	VIR-CMV 110
CMV C10/C11	Mix of 2 CMV pp65 monoclonal antibodies	200 tests	VIR- CMV C10/C11
CMV FITC Conjugate	Sheep anti-mouse-FITC	200 tests	VIR-FITC
Control slides	CMV pp65 positive and negative cytopots	set of 5	VIR-CMV CS05

CMV infection in the healthy human, is usually subclinical. However, in the immunocompromised host and the developing foetus it may result in either localized or disseminated disease. Clinical manifestations of CMV disease include pneumonia, retinitis, hepatitis, enteritis, and neurological disease. Despite improved treatment modalities, CMV infection may result in significant morbidity and mortality. Patients are at risk from both primary CMV infection and reactivation of latent infection.

Early and rapid diagnosis of active CMV infection is of great importance in avoiding over-treatment with immunosuppressive drugs and in guiding antiviral therapy. The standard in CMV testing, antigenemia, is a non-culture technique that detects an active infection by blood sample analysis and is optimized for use in the CMV Brite™ and CMV Brite™ Turbo kit.

CMV Brite™, the first-ever FDA registered immunofluorescence antigenemia kit for in vitro CMV diagnosis, uses the well defined C10/C11 antibody cocktail to detect the CMV lower matrix phosphoprotein (pp65), an early antigen in virus replication, which is abundantly present in antigen-positive polymorphonuclear cells (PBMCs). The CMV Brite™ kit contains all the reagents and sample analysis is completed in 4 hours. The kit is available in 40 and 100 test format. The 40 test kit is designed for analysis of single patient samples per experiment, while in the 100 test kit more patient samples can be analyzed in parallel per experiment. A unique feature of this kit is the option for further susceptibility studies of the (positive) isolated PBMC fraction not possible with any other antigenemia kit. The CMV Brite™ Turbo kit, is a rapid version of the CMV Brite™ kit and results are obtained in 2 hours!



*Typical result using CMV Brite™ Turbo kit. Immunofluorescence staining of a CMV pp65 antigen positive PMN. Negative cells show red counterstaining.*